








Technical parameters

			 (mm)	 (mm)	 (S.p.m)	A	M	H	 (mm)	NW/GW (kg)
A2B-C	DB×1 11-18#	2	5	5-13	5000	✓	✓		645×248×550	30/36.5kg
A2B-CH	DP×5 18-21#	2	5	5-13	3500			✓	645×248×550	30/36.5kg
A2B-CH-7	DP×5 18-21#	2	7	5-13	3500		✓		645×248×550	30/36.5kg
A2B-CH-M	DB×1 11-18#	2	5	5-13	5000	✓	✓		645×248×550	30/36.5kg



Website



Instagram

SM Maquinaria
37 Ave 3-13 Zona 7 Col. El Rodeo

502.2315.8408
502.2315.8409

info@smmaquinaria.com
www.smmaquinaria.com

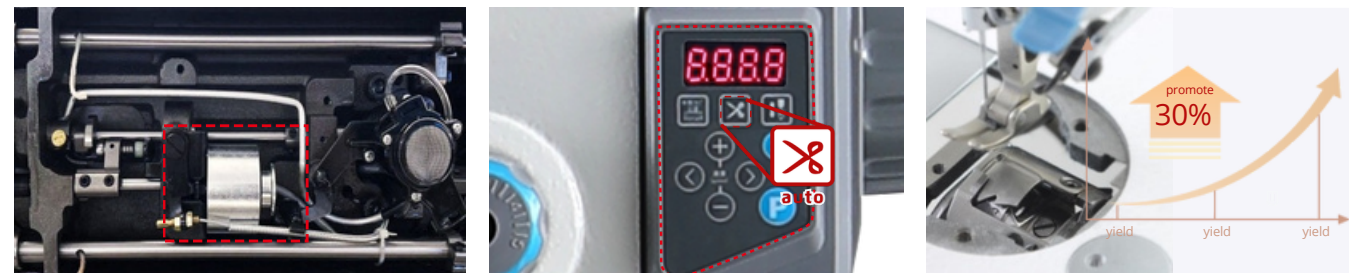


Direct drive with
Auto Trimmer



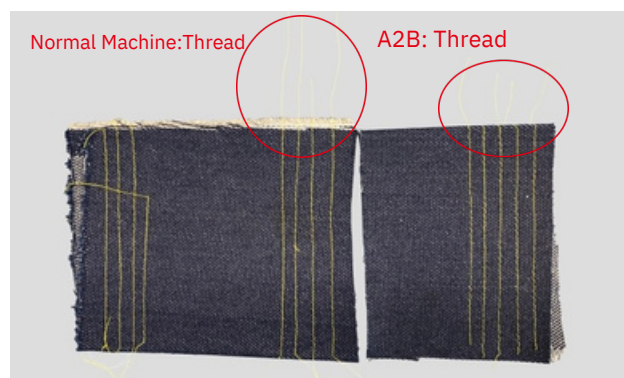
A2B

Sewing and trimming 12cm material for 10 times



1 Automatic thread trimmer ,achieve high efficiency

Automatic thread trimmer, 30% efficiency improve, increase production capacity, faster delivery, shorter thread tail before sewing and beautiful stitches.



2 Save thread

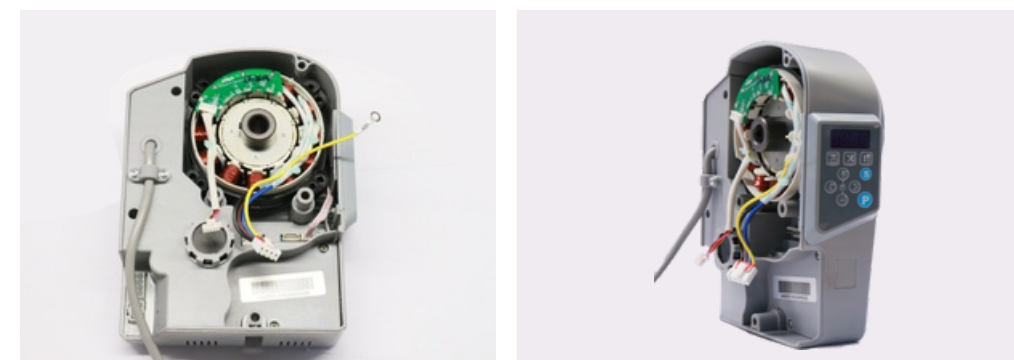
Normal machine: Thread tail more than 7cm, A2B just 4cm approximately, Save thread.



3 Safety protection

4 For light and heavy fabric

Enlarge the sewing range, suitable for various Of fabrics like yarn and jeans.



5 Motor and control box is more applicable, easy service

The control box of A2B and direct drive machine are interchangeable, the service is more secure.

strictly test



- 1.Machine running-in test: 500 hours.
- 2.Control box switch test: 30,000 times.
- 3.LED light switch test: 5 million times.
- 4.Voltage range test: 130-280V for 300 hours.
- 5.Machine high & low temperature test: -20℃-50℃ 500 hours.
- 6.Lightning Test: 3000V.